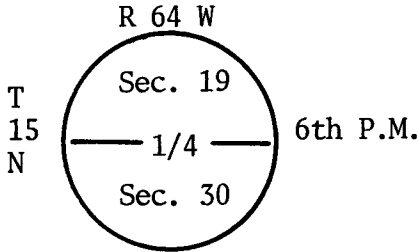


**CERTIFIED LAND CORNER RECORDATION**

DESCRIPTION OF CORNER EVIDENCE FOUND, AND ORIGINAL RECORD (If known)

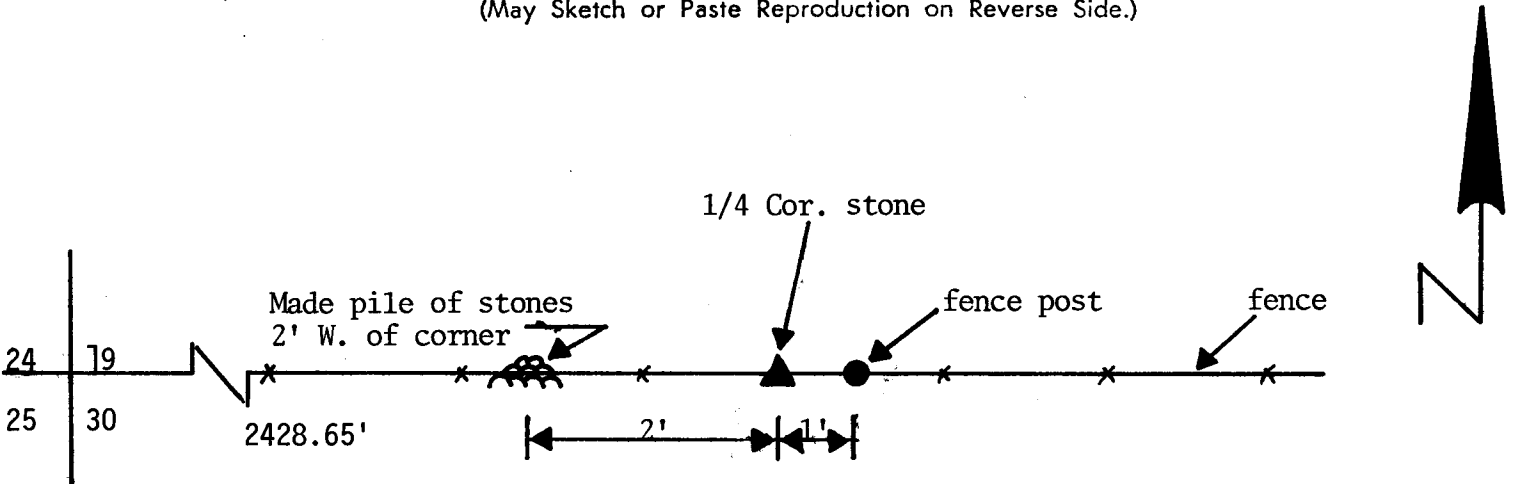


Found 17"x10"x6" Limestone, firmly set, covered by soil 1" deep and plainly marked with 1/4 on the south face of the stone.

DESCRIPTION OF MONUMENT AND ACCESSORIES ESTABLISHED TO PERPETUATE THE ORIGINAL LOCATION OF THIS CORNER:

see ties below

SKETCH, WITH COURSE AND DISTANCE TO ADJACENT CORNER IF DETERMINED IN THIS SURVEY. (May Sketch or Paste Reproduction on Reverse Side.)



I, Glen L. Roberts certify that I have carefully performed or reviewed the work done on the diagrammed corner as reported on this recordation form and approve the same.

*Glen L. Roberts* Wyo. P.E.&L.S. #347  
Signature of Surveyor Registration No.

STATE OF WYOMING,  
Office of Clerk and Recorder,  
County of Sarasota

#615468

This "corner record" was filed for record on the APR 10 1981 day of 19, 1981, was noted on the cross-index plat and is assigned page No. R-3, in book No. 15-64

*Janet C Whitehead*  
County Official

|                 |          |          |            |
|-----------------|----------|----------|------------|
| Cross Index No. | T. _____ | R. _____ | Mer. _____ |
|                 | T. _____ | R. _____ | Mer. _____ |
|                 | T. _____ | R. _____ | Mer. _____ |
|                 | T. _____ | R. _____ | Mer. _____ |
|                 | T. _____ | R. _____ | Mer. _____ |
|                 | T. _____ | R. _____ | Mer. _____ |
|                 | T. _____ | R. _____ | Mer. _____ |